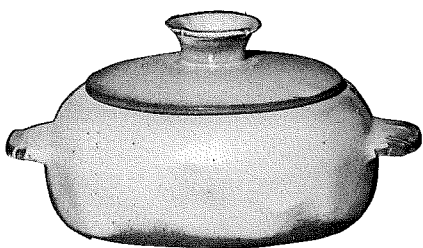


THE PLAINSMAN COLLECTION



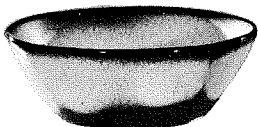
*5V—2 QT. BAKER/BEAN POT
*5V/W—BAKER/W WARMER SET



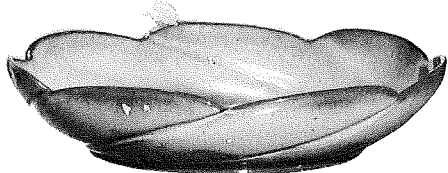
*5W—3 QT. BAKER/BEAN POT
*5W/W—BAKER/W WARMER SET



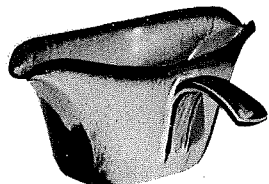
*5N—4 1/2" QT. BOWL



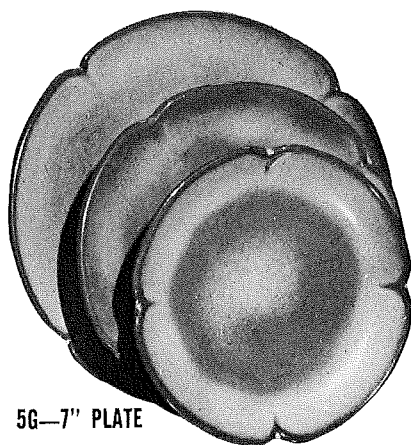
*5X—14 OZ. CEREAL



*218—12" BOWL

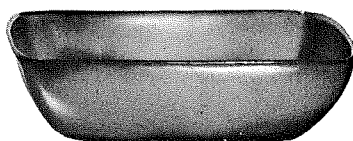


*6S—TWO SPOUT GRAVY

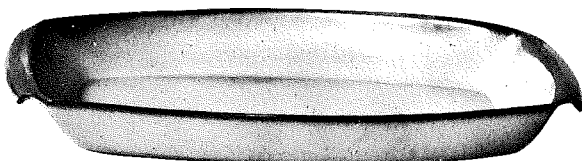


5F—10" PLATE

5G—7" PLATE

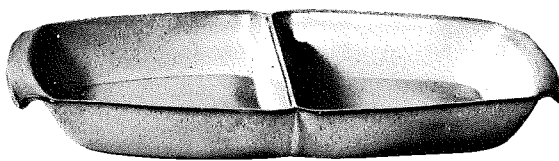


*5NS—9" VEGETABLE

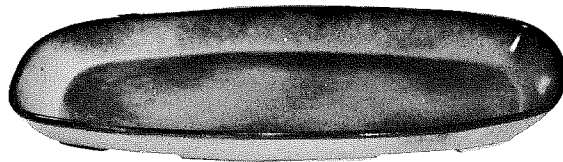


*5P—17" PLATTER

*5Q—13" PLATTER



*5QD—13" DIVIDED BOWL



*5QS—13" PLATTER

*5PS—9" TRAY

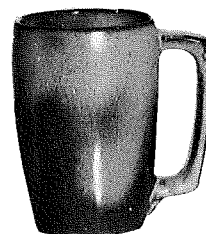
*6P—11" PLATTER



*6T—6 CUP TEAPOT



*6J—2 CUP TEAPOT



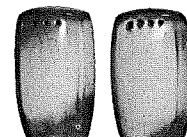
*5M—16 OZ. MUG



*5CC—5 OZ. TEACUP

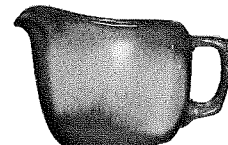


** 5C—CUP
5E—5 1/2" SAUCER



*5H—SALT & PEPPER

*5AB—CREAM & SUGAR SET



*5A—12 OZ. CREAMER



*5B—SUGAR WITH LID

COLORS AVAILABLE

- BROWN
- COUNTRY BLUE
- CABERNET
- GOLD
- GREEN
- FOREST
- NAVY
- TEAL
- NAVY/TERRA COTTA
- TEAL/TC
- WHITE/TC

FRANKOMA POTTERY

A Division of Frankoma Industries, Inc.
 Box 789 • 2400 Frankoma Road
 Sapulpa, Oklahoma 74067
 918-224-5511 • 800-331-3650
 FAX 918-227-3117